

Cell Culture Dishes

Ideal for all types of culturing where microscopic observation is required. Numeric marks on the bottom of each dish allow users to identify the location of cells.

Features

1. High clarity polystyrene
2. Flat transparent surface for distortion-free observation
3. Vacuum plasma TC treatment, excellent cell adherence
4. Stackable for easy storage and handling
5. Sterilized by E-Beam
6. Non-pyrogenic

Description

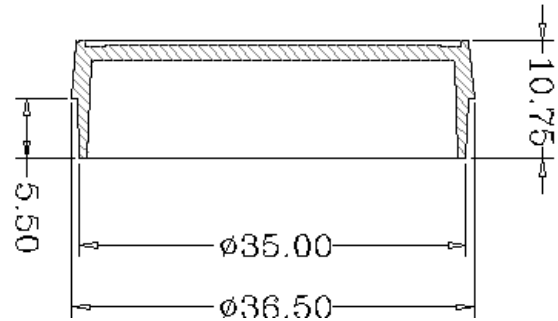
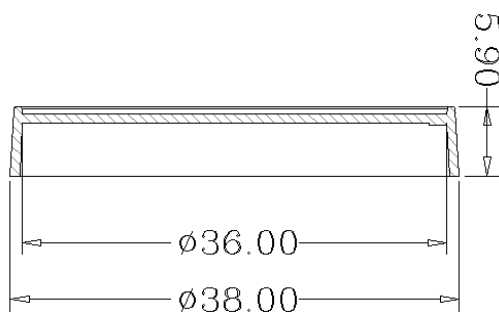
| | |
|-------------------|--|
| Temperature Range | : Approx.-86 to+64°C |
| Shelf Life | : 3 Years after date of production (ensure package is in good condition) |
| Sterile | : Yes |

Product Range

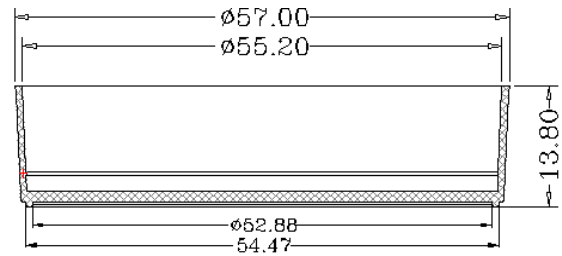
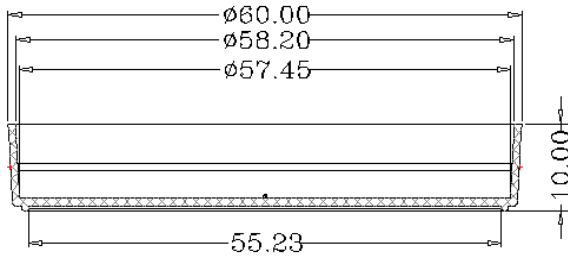
| Cat.No. | Spec | | Cell Growth Area (cm ²) | Recommended Medium Volume (mL) | /Pack | /Case |
|---------|--------------------------|----------------|--|-----------------------------------|-------|-------|
| | Type | Height (mm) | | | | |
| 706001 | 35 | 12 | 8.5 | 1.8-2.7 | 20 | 500 |
| 706201 | 35 (With Gripping Ring) | 12 | 8.5 | 1.8-2.7 | 20 | 500 |
| 705001 | 60 | 15 | 22.9 | 4.2-6.3 | 20 | 500 |
| 704004 | 100 | 20 | 57.6 | 11-16.5 | 5 | 300 |
| | | | | | | |
| 704001 | 100 | 20 | 57.6 | 11-16.5 | 20 | 300 |
| | | | | | | |
| 704201 | 100 (With Gripping Ring) | 20 | 59.3 | 11-16.5 | 20 | 300 |
| 715001 | 150 | 25 | 150.1 | 30.4-45.6 | 5 | 100 |

Technical Drawing

35mm cell culture dishes



60mm cell culture dishes



100mm cell culture dishes

